



Dataforensics

I-26 Interchange Improvements
Charleston, SC
Project No: 1131-98-725

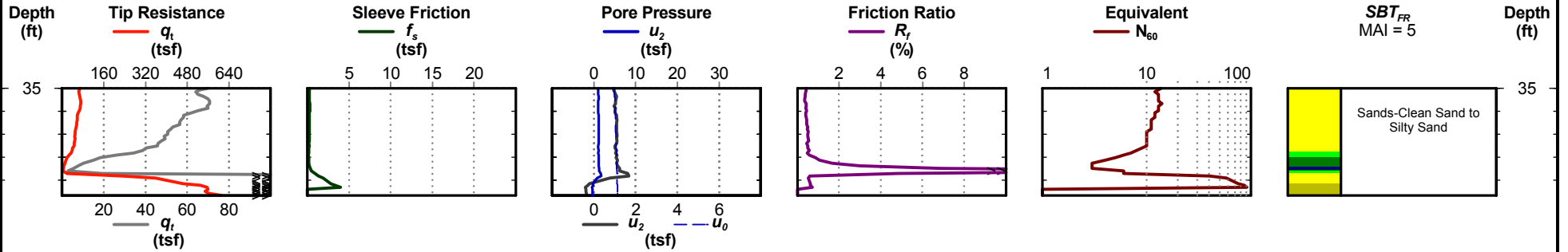
Cone Penetration Test

C-6

Date: May. 1, 2000
Estimated Water Depth: 3.5 ft
Rig/Operator:

Latitude:
Longitude:
Elevation:

Total Depth: 39.7 ft
Termination Criteria:
Cone Size: 1.44



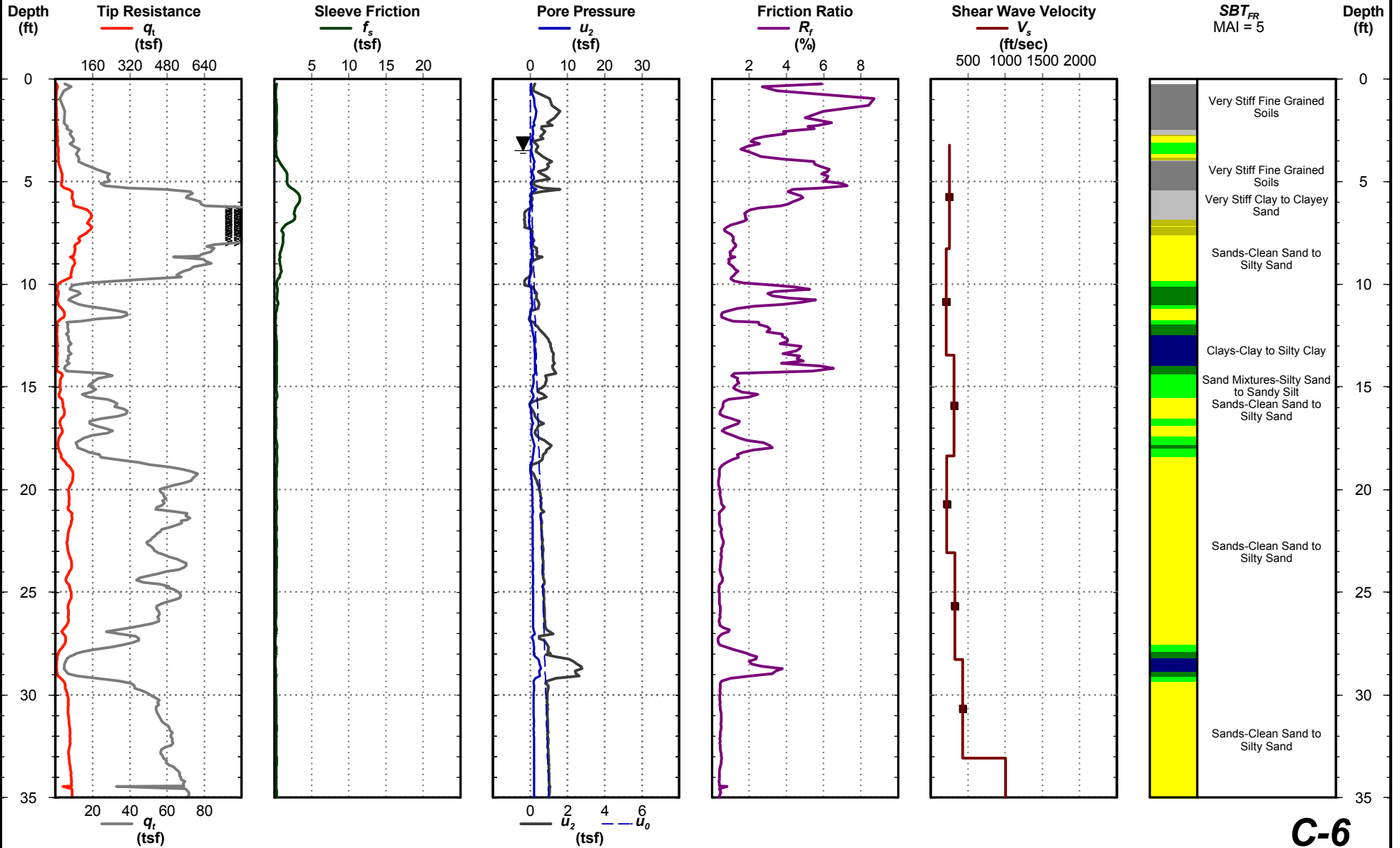
C-6



Date: May. 1, 2000
Estimated Water Depth: 3.5 ft
Rig/Operator:

Latitude:
Longitude:
Elevation:

Total Depth: 39.7 ft
Termination Criteria:
Cone Size: 1.44





Dataforensics

I-26 Interchange Improvements
Charleston, SC
Project No: 1131-98-725

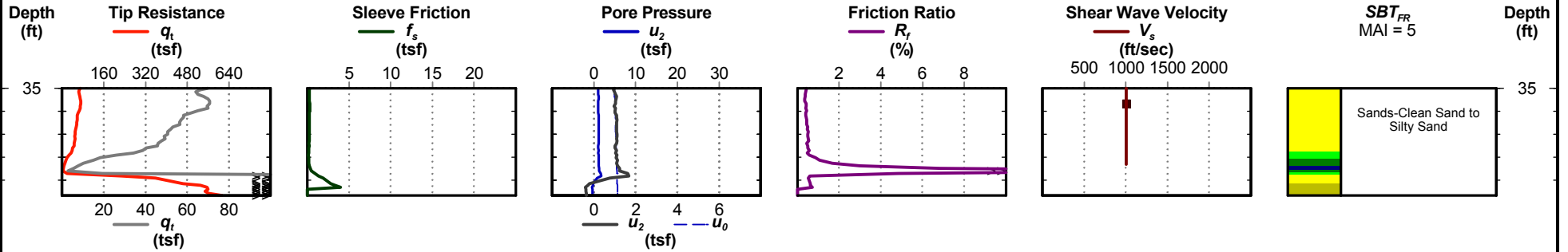
Cone Penetration Test

C-6

Date: May. 1, 2000
Estimated Water Depth: 3.5 ft
Rig/Operator:

Latitude:
Longitude:
Elevation:

Total Depth: 39.7 ft
Termination Criteria:
Cone Size: 1.44



C-6



Dataforensics

I-26 Interchange Improvements Charleston, SC

Project No: 1131-98-725

Cone Penetration Test

C-6

Date: May. 1, 2000

Estimated Water Depth: 3.5 ft

Rig/Operator:

Latitude:

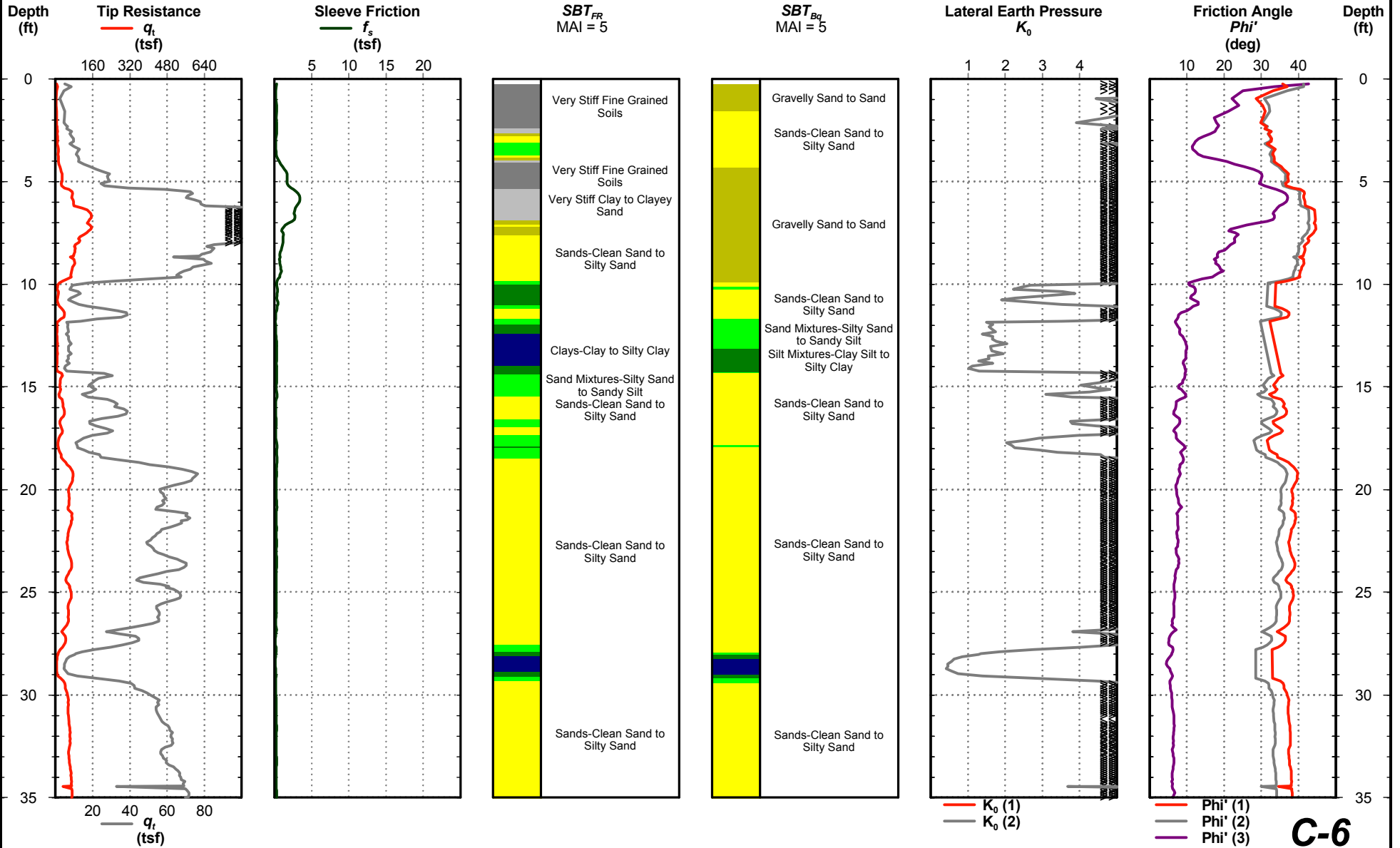
Longitude:

Elevation:

Total Depth: 39.7 ft

Termination Criteria:

Cone Size: 1.44



CPT REPORT - DYNAMIC TUTORIAL 1.GPJ CPT.GDT 1/3/07

C-6



Dataforensics

I-26 Interchange Improvements
Charleston, SC
Project No: 1131-98-725

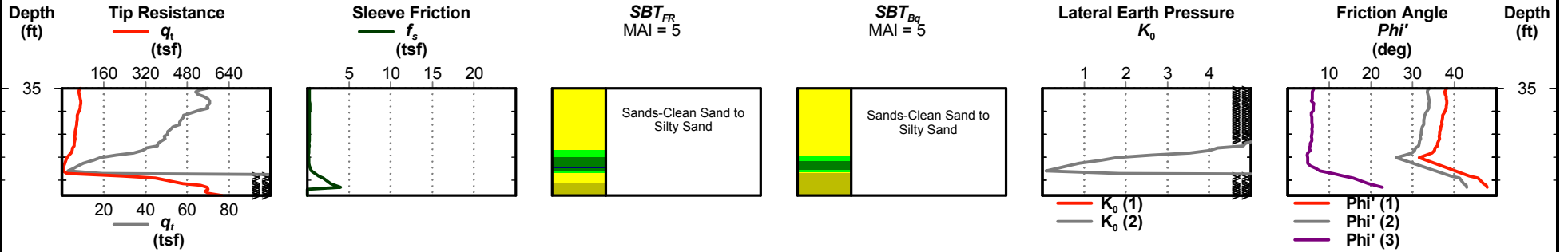
Cone Penetration Test

C-6

Date: May. 1, 2000
Estimated Water Depth: 3.5 ft
Rig/Operator:

Latitude:
Longitude:
Elevation:

Total Depth: 39.7 ft
Termination Criteria:
Cone Size: 1.44



C-6



Dataforensics

I-26 Interchange Improvements
Charleston, SC
Project No: 1131-98-725

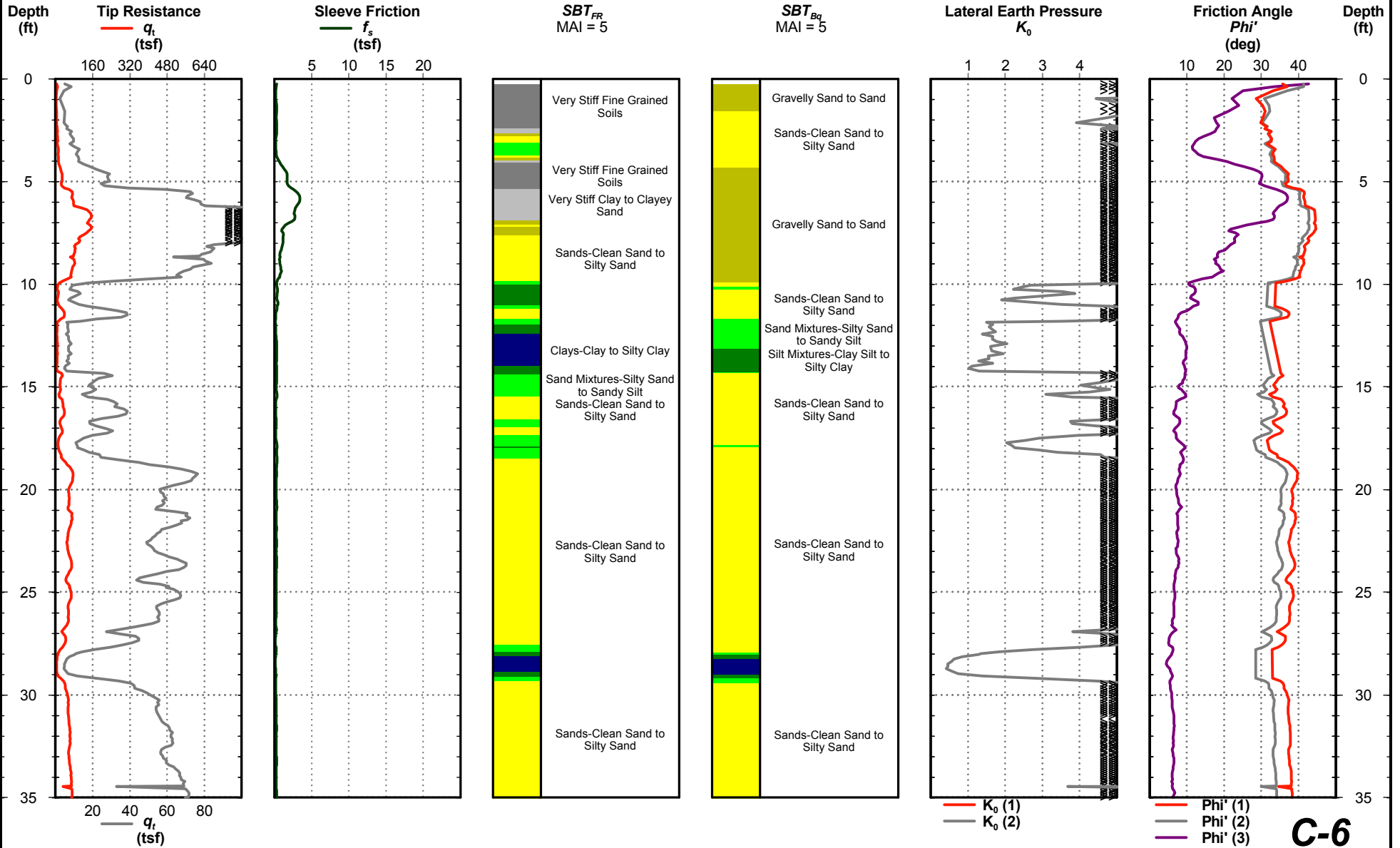
Cone Penetration Test

C-6

Date: May. 1, 2000
Estimated Water Depth: 3.5 ft
Rig/Operator:

Latitude:
Longitude:
Elevation:

Total Depth: 39.7 ft
Termination Criteria:
Cone Size: 1.44



CPT REPORT - DYNAMIC TUTORIAL 1.GPJ CPT.GDT 1/3/07

C-6



Dataforensics

I-26 Interchange Improvements
Charleston, SC
Project No: 1131-98-725

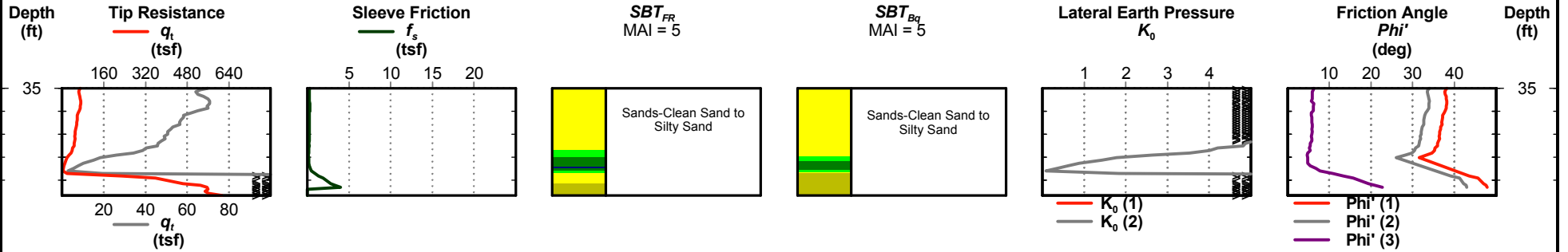
Cone Penetration Test

C-6

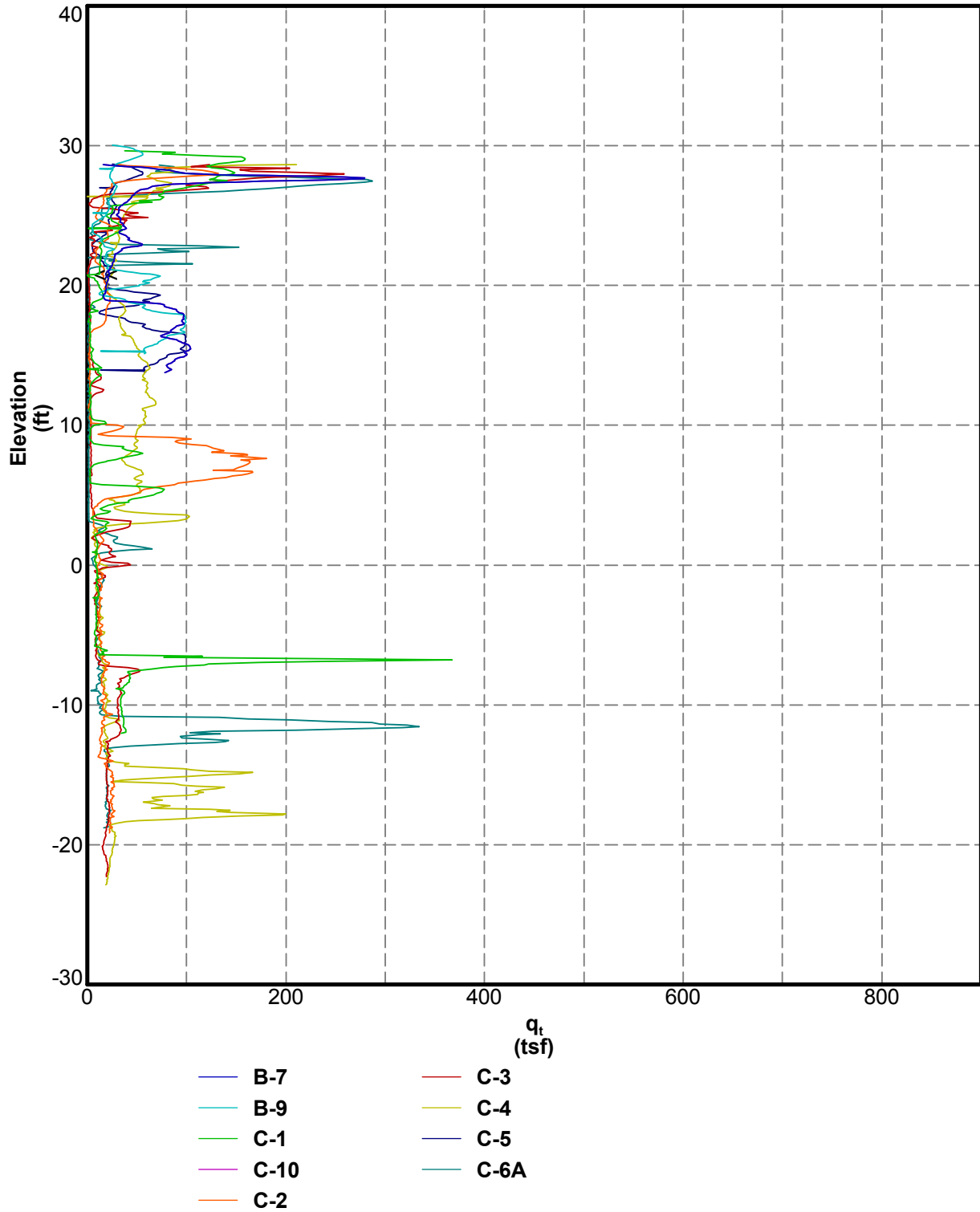
Date: May. 1, 2000
Estimated Water Depth: 3.5 ft
Rig/Operator:

Latitude:
Longitude:
Elevation:

Total Depth: 39.7 ft
Termination Criteria:
Cone Size: 1.44



C-6

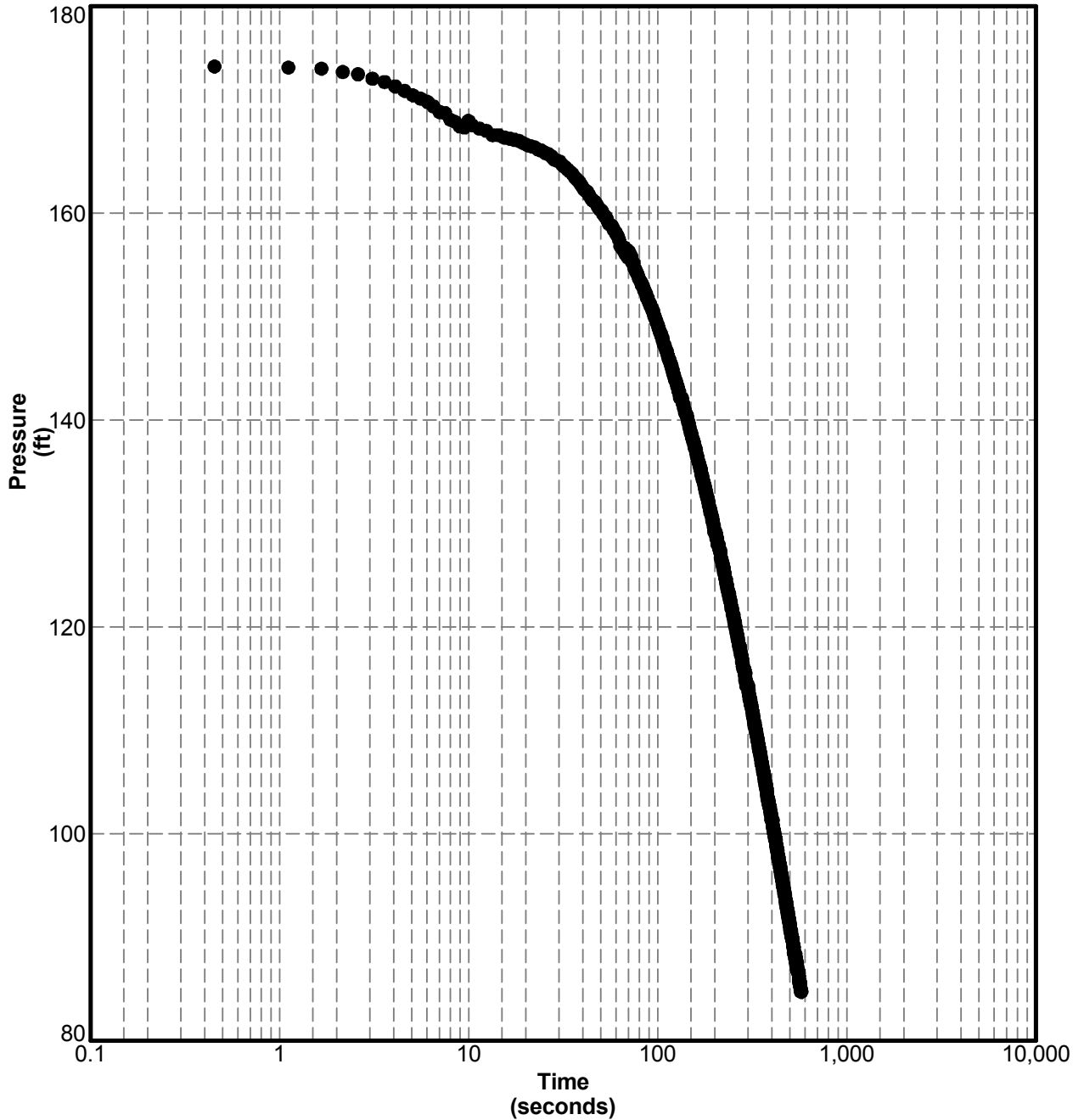


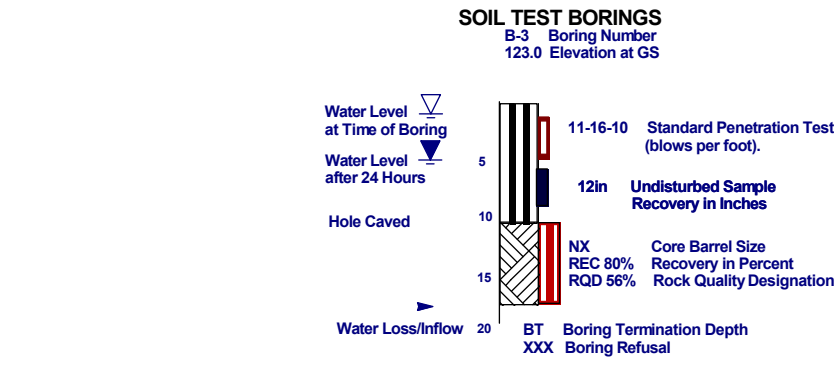
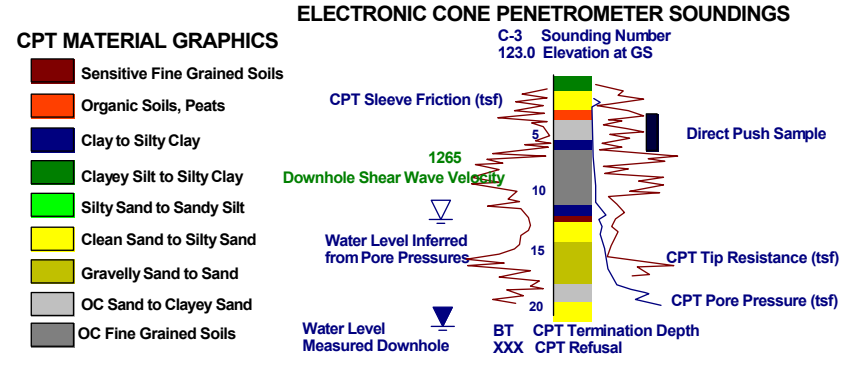
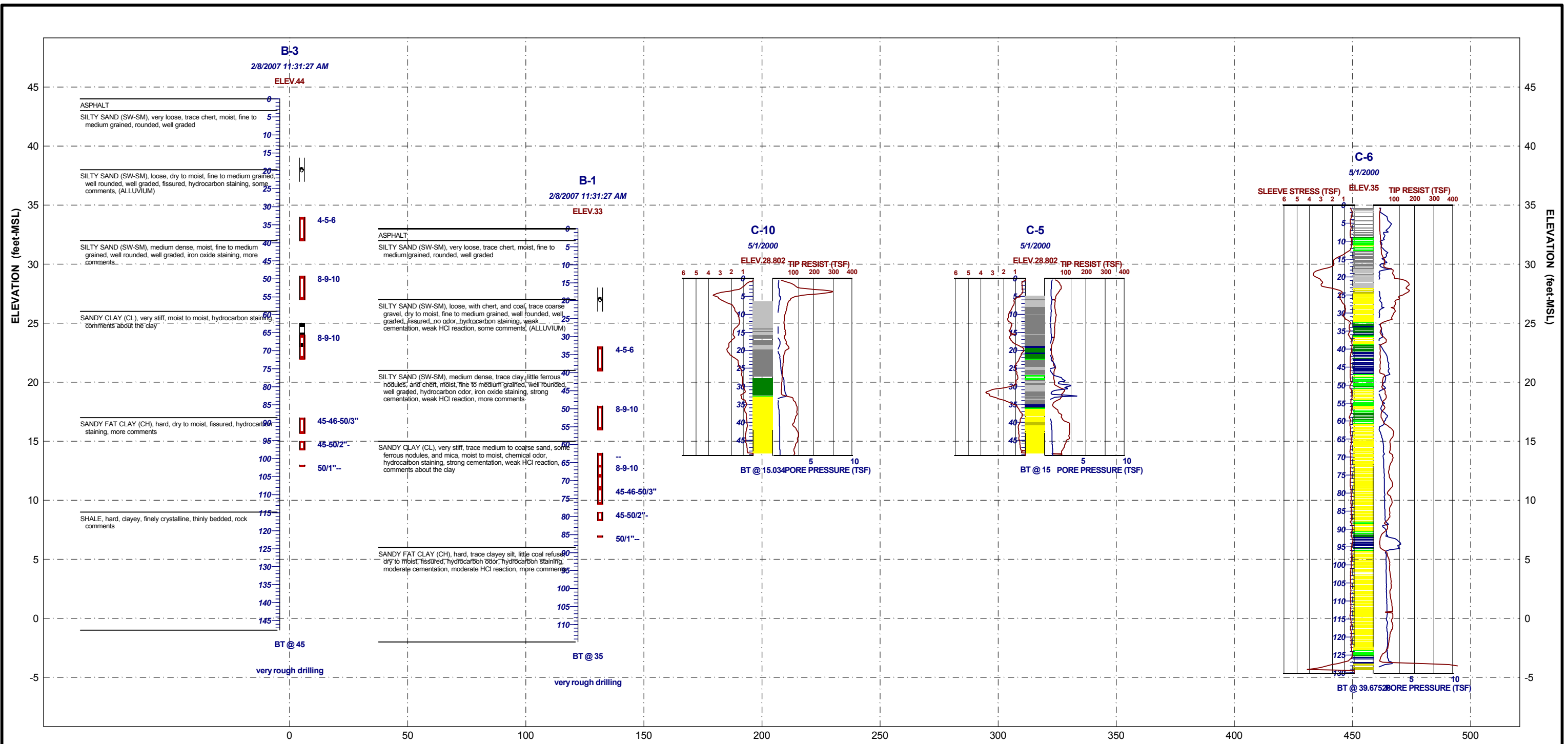


Date: May. 1, 2000
Estimated Water Depth: 6 ft
Rig/Operator:

Latitude: 403530.42
Longitude: 2291288.06
Elevation: 28.802

Depth: 32.1 ft
Termination Criteria:
Cone Size: 1.44





LEGEND OF MATERIAL GRAPHICS for SOIL TEST BORINGS

SUBSURFACE PROFILE	JOB NO: 1131-98-725
PROJECT: I-26 Interchange Improvements	DATE: 2/13/07
LOCATION: Charleston, SC	